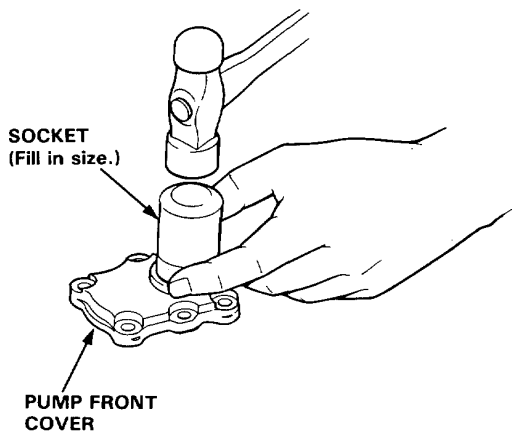
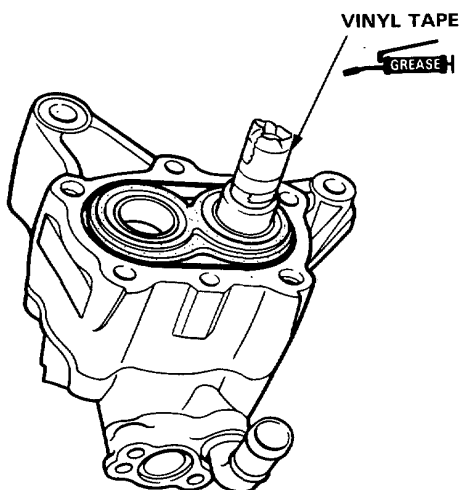




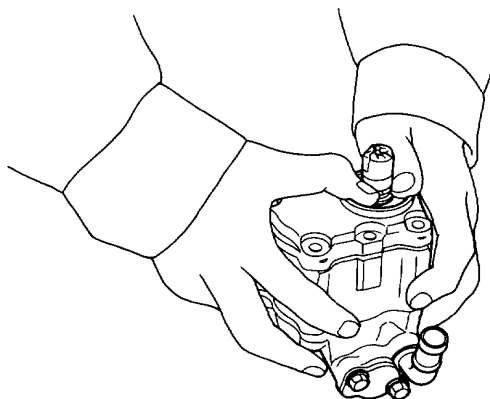
11. Install the new oil seal in the pump front cover; get it started by hand, then use a socket to push it in the rest of the way.
12. Coat the lip of the seal with steering grease (Honda P/N 08733-B070E).



13. Wrap the splined area of the drive gear with vinyl tape and grease the surface of the tape.

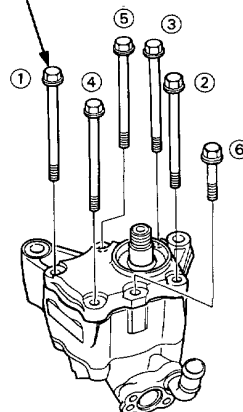


14. Slide the pump front cover over the drive gear, being careful not to damage the sealing lip or dislodge the spring of the oil seal, then remove the vinyl tape.



15. Install the five bolts. Torque them to the specified torque in the order shown.

FLANGE BOLT
12 N·m (1.2 kg-m, 9 lb-ft)



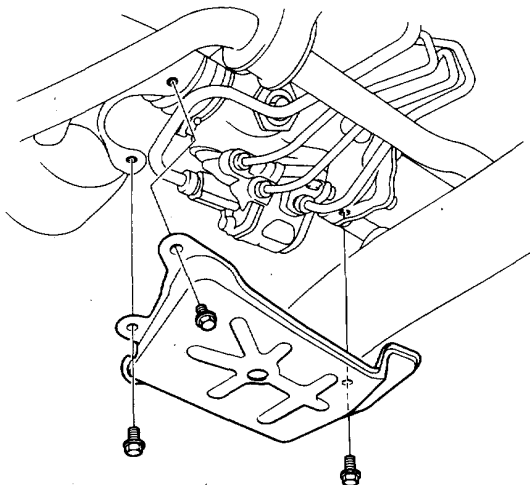
16. Install the control valve (page 11-34).
17. Install the pulley (page 11-32) and check the pump preload with a torque wrench (page 11-31).

Steering Gearbox

Valve Body Unit Overhaul

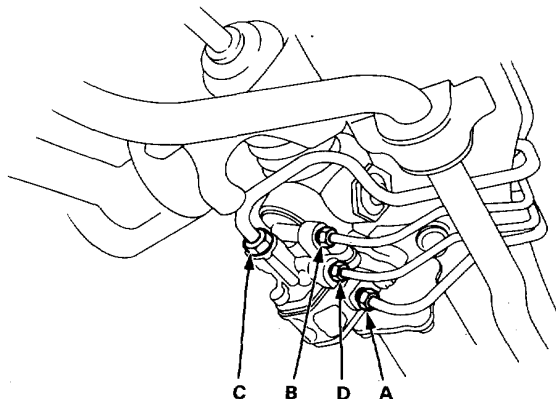
Removal:

1. Drain the power steering fluid (page 11-19).
2. Remove the gear box shield.

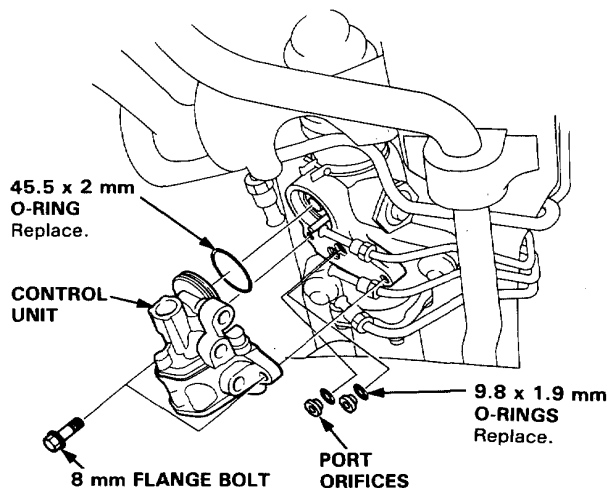


3. Using solvent and a brush, wash any oil and dirt off the control unit, its lines, and that end of the gearbox. Blow dry with compressed air.
4. Using flare nut wrenches, disconnect the four lines from the control unit.

A: From pump: 14 mm wrench
B: To oil cooler: 12 mm wrench
C: To reservoir: 17 mm wrench
D: To speed sensor: 12 mm wrench



5. Remove the two 8 mm flange bolts and remove the control unit from the gearbox.
6. Remove the O-rings and port orifices from the gearbox.



Disassembly:

1. Remove the O-ring from the control unit.
2. Remove the three 6 mm flange bolts, and remove the cap from the valve body.
3. Remove the cap seal from the cap.

